

# CIMENTO®



## CIMENTO® FORMELLE TONDO

Product data sheet

 **EPD**  
INTERNATIONAL EPD SYSTEM

## Description

**CIMENTO® FORMELLE TONDO** are a **CIMENTO®** product designed to allow the covering of existing structures. The are composed of a cement conglomerate to which a fiberglass net is added. **CIMENTO® FORMELLE TONDO** is an incombustible product.

## Destination of use

The **CIMENTO® FORMELLE TONDO** slab for the covering vertical surfaces is intended for an exclusive use in internal ambients; to preserve the aesthetic and functional conditions of the **CIMENTO®** surface for as long as possible, it is advisable to refer to the methods and precautions of use as indicated on the maintenance and installation manual for **CIMENTO® FORMELLE TONDO**.

## Notes

The installation must be carried out by personnel specialized, and surfaces anchoring the panels to the underlying structure with the use of specific adhesives and following the instructions specifically indicated in the respective technical data sheets.

## Cleaning e Maintenance

Do not use chemicals, abrasive cleaners, solvents, and polishing products. The **CIMENTO®** surface is treated with a protective system that prevents the penetration of dirt, be it dry, wet, or greasy, and facilitates cleaning operations.

However, the characteristic coexistence of smooth and porous parts requires some simple precautions during ordinary cleaning. It is important to prevent dirt and deposits from being moved and accumulating in the porous portions, especially in the case of moist or greasy substances.

For routine maintenance we recommend the following operations, to be carried out in the specified:

1. Preliminarily remove all dry deposits with a vacuum cleaner equipped with a soft bristle brush, to remove dust and solid residues from both smooth and porous areas of the surface;
2. Rub the surface with a dry microfibre cloth or moistened with water, then dry, if necessary, with an additional clean and dry microfibre cloth to avoid leaving marks;
3. If the surface comes into contact with staining substances, act on the affected area with a cloth moistened with ammonia solutions or similar products (avoiding degreasers that require abundant rinsing) then dry with a clean, dry cloth. Do not use aggressive acid-based, solvent-based, or abrasive agents.

Any variations with respect to the sample are not to be considered defects but as a characteristic of the product and its manual processing which can cause variations in tone. Therefore, Sai Industry srl does not assume any responsibility in case of variations; they are not to be considered defects and are not covered by warranty, in particular for products purchased at different times.

For detailed information on installation, design and maintenance, please refer to the appropriate manuals. Whenever needed contact the **CIMENTO®** sales office.

## Storage

Protect edges and corners from knocks with special protections to avoid possible chipping.

Protect the sheet from contacts with staining substances, blades, and sharp objects, or scratches that could damage the **CIMENTO®** finish by storing it in the appropriate packaging.

Store the on a flat, levelled, and dry surface, ensuring a homogeneous support over the entire surface.

It is possible to stack packages of the same size. Do not overlap the packaging with other materials that may damage the packaging or the sheets.

## Characteristics of the CIMENTO® FORMELLE TONDO

The **CIMENTO® FORMELLE TONDO** are available in three different models or, upon customer request, they can be made according to the project specifications.

dimensioni	peso	spessore
Formelle Tondo	0,412 kg	20 mm

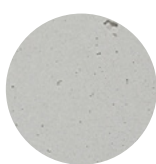
## Finishes and colors available

**CIMENTO® FORMELLE TONDO** are available in a wide range of standard colors obtained with the use of natural oxide-based pigments, thanks to which a high color stability to light is achieved.

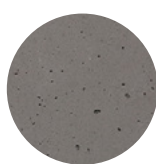
### NEUTRAL COLORS



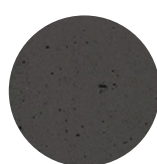
CL01



CL02



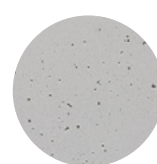
CL04



CL05

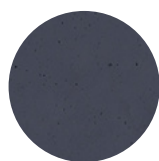


CL06

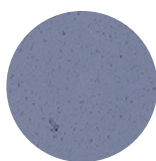


CL10

### COLOR CHART



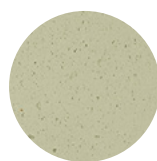
CL45



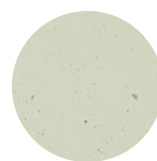
CL46



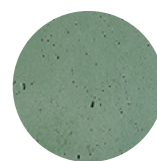
CL47



CL48



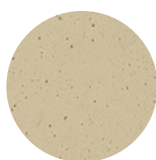
CL49



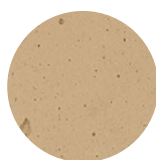
CL21



CL50



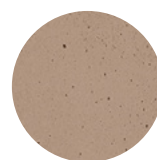
CL51



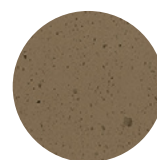
CL52



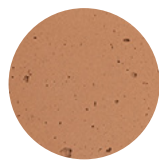
CL36



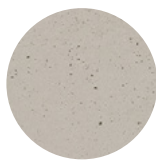
CL54



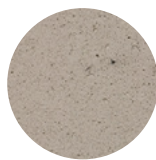
CL55



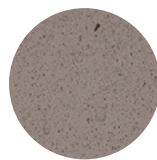
CL56



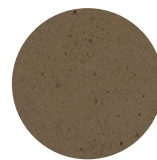
CL26



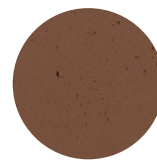
CL44



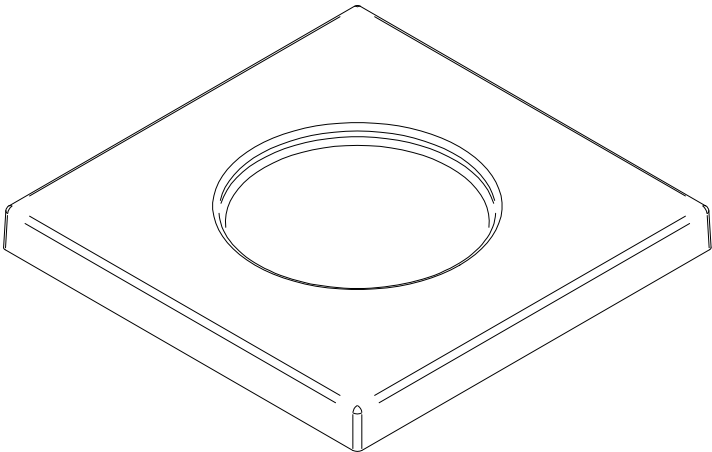
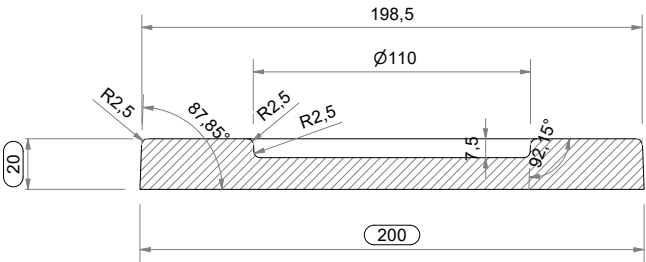
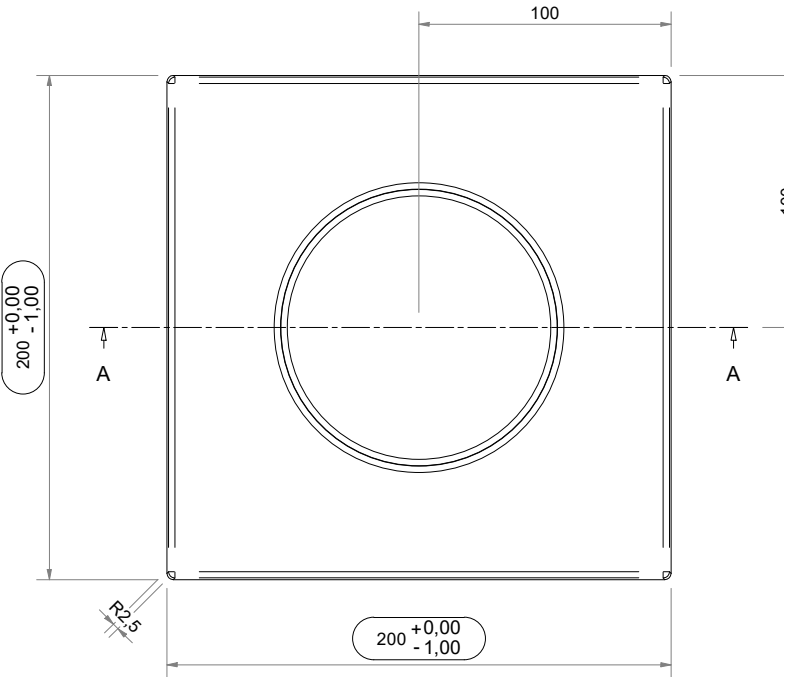
CL57



CL58



CL59



REV	DATE	DRAWER	DESCRIPTION	NOTICE
<div><div><div>CIMENTO®</div><div>Via J.F. Kennedy, 107 30027 San Donà di Piave VENEZIA - ITALY T. +39 0421 65422 F. +39 0421 308084 info@cimento.tech www.cimentocollection.com</div></div><div>DESCRIPTION:<div>FORMELLA TONDO-CIMENTO-CIMENTO - VEDI TABELLA FINITURE-DIM.200x200x20H</div></div><div>MATERIAL: CIMENTO</div><div>FINISHING: CIMENTO - VEDI TABELLA FINITURE</div></div>				
GENERAL TOLERANCE <b>UNI EN 22768 m</b> MAX LINEAR DEVIATION mm			DATE: 20/02/2023	APPROVED:
0.5-3 3-6 6-30 30-120 120-400 400-1000 1000-2000			SCALE: 1 : 2	WEIGHT: N/A
± 0.1 ± 0.1 ± 0.2 ± 0.3 ± 0.5 ± 0.8 ± 1.2			N°TAV. 1	FORM. TAV. A3
Reproduction or publication of this document, in whole or in part, shall be subject to prior authorization by SAI Industry srl (Art. 2578 of Law no. 633 dated 22/04/41 of the C.C.).			DRAWER: MN	REFERENCE: CODE: CTNFO01-V00

# CONTACTS

## HEADQUARTER/SHOWROOM

Via J.F. Kennedy, 107/a - 30027  
San Donà di Piave - VE - IT  
Tel. +39 0421 65422

## SHOWROOMS

### IT

Via Borgogna, 7 - 20122  
Milano - IT  
showroom@cimento.tech  
Tel. +39 02 82772692

### CH

Piazza Santa Lucia, 7 - 6900  
Massagno LVGA- CH

### UK

The Cube Building | 17-21  
Wenlock Road - N1 7GT  
London- UK

**info@cimento.tech**



**www.cimento.tech**

Tutte le informazioni contenute in questa brochure sono soggette a cambiamenti. Tutti i diritti sono riservati. Nessuna parte di questa brochure può essere riprodotta senza il nostro permesso scritto.

All the information on this brochure are subject to changes. All rights reserved. Reproduction in whole or in part of the contents of this brochure is prohibited without our written consent.

Rev. 23mag2025

©CIMENTO®



**EPD**  
INTERNATIONAL EPD SYSTEM